

ELEMENT 5 COMMUNITY FACILITIES

Maps and Tables Index	1
INTRODUCTION.....	2
HARRIS COUNTY.....	2
Inventory and Assessment.....	2
Water Supply and Treatment.....	2
SEWAGE SYSTEM	4
Storm Drainage	5
Natural Gas.....	5
Solid Waste	5
PUBLIC SAFETY.....	6
Law Enforcement	6
Fire Protection	7
Emergency Medical Service.....	8
E 9-1-1	8
Harris County Emergency Management Agency.....	9
HEALTH AND HUMAN SERVICES	9
Harris County Health Department.....	9
Private Health Care	10
Department of Family and Children Services (DFACS)	10
EDUCATION.....	10
Harris County Board of Education.....	10
Private Schools	11
Post Secondary School	11
RECREATION AND PARKS	12
GENERAL GOVERNMENT	15
General Administrative Offices	15
Library and Other Cultural Facilities	15
Extension Service.....	15
Senior Center.....	16
United States Post Office	16
OTHER.....	16

Maps and Tables Index

Map 1	Community Facilities in Harris County, Georgia.....	3
Table 1	Projected Water Needs, 2030, Harris County.....	4
Table 2	Fire Resources.....	7
Table 3	Harris County, Enrollment by School 2008-2009.....	11
Table 4	Recreational Resources and Facilities	14

INTRODUCTION

Community facilities play an important role in maintaining and improving the quality of life in a community. Both the well-being of individual citizens and the value of their property depend upon the provision of adequate community facilities. The adequacy and quality of such facilities helps to determine the growth potential of an area. These facilities can also be used to influence and guide the direction of private development; for example, the location and timing of utility extension can channel future development into the most desirable growth areas. (See Map 1 Community Facilities in Harris County)

HARRIS COUNTY

Inventory and Assessment

Water Supply and Treatment

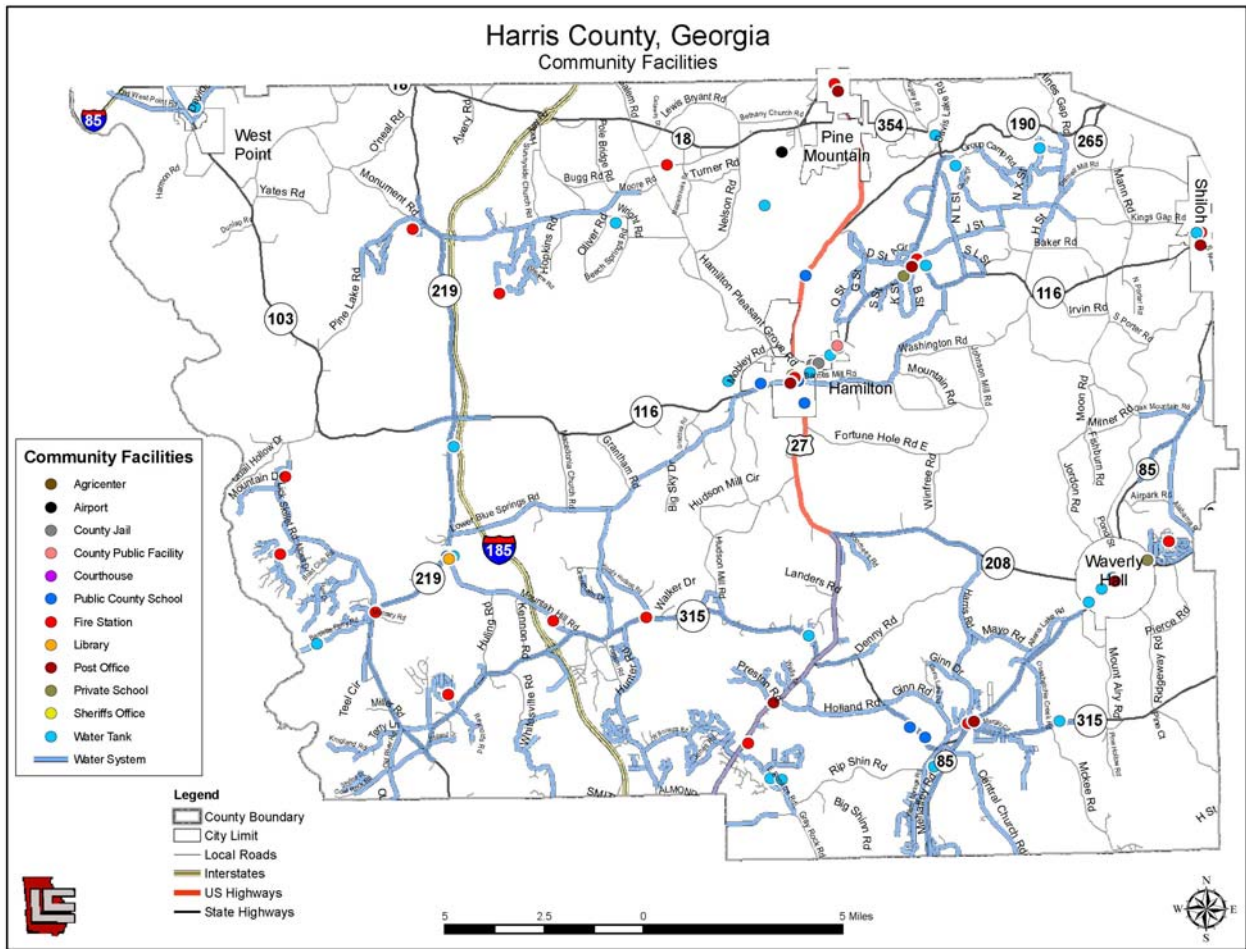
Harris County operates a public water system, which serves a total of approximately 7,526 water customers. Residential customers are the primary users of the facility totaling 7,433 customers (or 98.7% of all customers). Average daily water usage for all of Harris County's water customers is 2.5 million gallons a day. The Harris County water department is located off GA Highway 315 in Cataula. The Community Facilities Map (Map 1) indicates the distribution area for public water in the unincorporated areas of the County. As shown, the primary location of public water availability is in the southern portion of the County.

The primary source of water supply is the Chattahoochee River, which flows down the western border of the County. The filter plant and intake system is located on Bartlett's Ferry Road. Harris County buys water from neighboring Muscogee County for an area in the southern end of the County. Harris County has four pump stations with Columbus plus two water line interconnections. Harris County has a contract with Columbus Water Works for a minimum of 15,000,000 gallons a month. Harris County also buys water from Talbot County to serve the Melody Lakes and Oak Mountain areas. Harris County's contract with Talbot County is for 2,500,000 gallons a month.

There are twelve existing tanks with a total capacity of 4,400,000 gallons. The individual tank capacity is listed below:

TANK LOCATION	CAPACITY
Kings Gap	250,000 Gallon
East Bonacre Road	300,000 Gallon
Cataula	200,000 Gallon
GA Highway 219	500,000 Gallon
Bartletts Ferry Road	200,000 Gallon
Wright Road	200,000 Gallon
Ellerslie	200,000 Gallon
GA Highway 116	500,000 Gallon
Cagle's Tank	500,000 Gallon
Mountain Hill School	1,000,000 Gallon
Jail Tank	50,000 Gallon
315 East Tank	500,000 Gallon

Map 1.
Community Facilities In Harris County, Ga.



An additional water system in unincorporated Harris County is located in Pine Mountain Valley and is operated by an association of residents in the valley. This system serves approximately 400 customers, most of which are residential. Both Pine Mountain Valley and Harris County supply water to Cagle's, a chicken processing facility.

The Harris County water system is located primarily in the southern part of the County, in the north-central area along Hopewell Church Road, and through the City of Hamilton east towards Pine Mountain Valley. Six-inch lines generally serve the lower eastern section of the County. System improvements completed in 1995 included the installation of a 12-inch line along GA Highway 315 to feed water into south Harris County. Substantial residential growth in this area will require distribution system upgrades. In order to better supply water into south central and southeast Harris County, a connection to the City of Columbus' water system at US 27 and the County line in Cataula was made in 2004. Also a connection to the City of Columbus' water system at McKee Road at the county line has been completed. Such connections will immediately increase the water supply by 700,000 gallons per day. In the southeast section of the County, line upgrades and an elevated storage tank (East 315 Tank) were recently completed.

Needs Assessment

Harris County's current pumping capacity is 4,000,000 gallons per day. Future demand for the year 2030 is estimated to be 9,091,871 gallons per day. Table 1 exhibits estimated future water use by type of users. Harris County's existing water pumping capacity is not going to be adequate to meet estimated 2030 demands. Harris County has applied to Georgia Power to increase their permit for water withdrawal from the Chattahoochee River from 3 million gallons per day to approximately 15 million gallons per day. This should more than adequately cover estimated future demands.

**Table 1
Projected Water Needs 2030
Harris County**

User	Gallons Per Day
Residential (Single Family) 51,203 Persons At 157 Gallons Per Day*	8,038,871
Commercial 165 Businesses At 200 Gallons Per Day	33,000
Industrial Heavy 1 Cagle's 4 Industry Light Water Processing Needs (70,000 Gallons)	600,00 280,000
Local Government Schools 9 At 10,000 Gallons Per Day	50,000 90,000
Total	9,091,871

*Usage numbers based on existing Harris County usage figures, with the exception of light industrial usage number. Industrial usage number taken from LaGrange water records for lighter water processing industry. Gallons per day estimate do not include a peak demand factor.

SEWAGE SYSTEM

Harris County does not have a county-wide sewage system. Harris County to date relies on septic tanks for sewage treatment. Harris County does have a contract with Columbus to extend a Columbus sewer line located on Fortson Road at the Harris County and Muscogee County border to The Grove. The Grove is a new, mixed-use development located at the intersection of I-185 and SR 315. Both the municipalities of Hamilton and Pine Mountain do operate a sewage collection and treatment system, which serve the incorporated areas. However, these systems do not extend into the unincorporated areas. The Pine Mountain sewage system was upgraded in 2002 with the installation of a four-acre pre-treatment pond and an 11-acre wetlands system with a UV disinfectant system, which increased sewer capacity by 50 percent. The total size for the wetland facility is 70 acres. Hamilton officials completed a new sewage treatment plant in 2008.

The Harris County Health Department requires that all buildings in the County have an adequate method of sewage disposal. Where a public system is not available, an owner must provide a septic system or alternative system. Building permits are not issued until sewage disposal plans have been approved by the Health Department.

Because Harris County soil types are considered moderate to severe for septic tank absorption fields, the location on site is a major consideration in site layout. The Health Department utilizes soil maps and percolation tests to determine the suitability of a location for a septic system. A 100 percent replacement area is required. In areas which need further study the Department may specify additional information and tests before issuance of a permit. It may also require a system design, which meets on-site conditions.

Private package sewage treatment systems may be used with Health Department approval; the Georgia Department of Natural Resources monitors system operation. High density residential development and commercial or industrial development of a certain size and type would require a

private sewage system. The County is in the process of developing design standards and specifications for private systems.

The supply of land for development in the southern portion of Harris County has become limited. Available tracts are often limited by physical constraints such as flood plains, slopes and poor soils. The provision of adequate on-site sewage disposal on the minimum two-acre parcels is made more difficult by such natural features.

Needs Assessment

Harris County officials continue to review all available sewage system options. The County will continue to develop County standards related to development of package treatment systems. Harris County may have to use all available sewage options to meet future growth demands.

Storm Drainage

Harris County's storm drainage system consists primarily of ditches with some curbs and gutters in new developments.

Needs Assessment

The storm drainage system is adequate for normal amounts of rainfall. Harris County officials need to monitor and maintain existing storm drainage systems.

Natural Gas

Portions of Harris County, primarily in the southern part along the Muscogee/Harris County line, are served by natural gas. Generally, gas lines are extended when the number of customers warrants. Several propane companies presently serve residents. The majority of customers are residential users.

Needs Assessment

Continue to allow private sector to provide natural gas to meet future demands.

Solid Waste

Harris County provides "curbside" garbage collection for the residents of the County; this service is provided within the municipalities as well. County trucks pick up and deliver the waste to a transfer station on Barnes Mill Road. Waste is trucked from the transfer station to the Subtitle D landfill owned and operated by the City of LaGrange. The County contracted with LaGrange in April 2004 to provide transportation and disposal for a term of ten years. On average, two truckloads of 25 tons each are transported out of the County daily by the City of LaGrange. Harris County also operates an active inert landfill. The landfill is utilized by the residents of Hamilton, Pine Mountain, Shiloh and Waverly Hall as well as unincorporated residents. Residential customers generate the majority of solid waste in Harris County and the municipalities.

The County accepts personal tires (no commercial) at the Transfer Station. They collect approximately 300 at a time. The tires are then transferred to LaGrange, Georgia. No tires are sent to the sanitary landfill. Yard waste received at the Transfer Station is chipped and is available free of charge to citizens for home use and to the County's Public Works Department. The Harris County Solid Waste staff routinely recovers metals, white goods, yard waste, inert waste, tires, and batteries at the Transfer Station.

Harris County also operates three manned convenience centers on Harrisville Road, GA Highway 116 and US Highway 27. The convenience centers operate 6 days a week. The centers have a compactor, roll-off containers and repository for reusable items. A convenience center is needed between Waverly Hall and Ellerslie. A convenience center is also needed in the northwest part of Harris County somewhere around the Whitesville area. The Towns of Pine Mountain and Shiloh have a drop-off site for recyclables only. The City of Hamilton will not require a structure as the existing County convenience center located on GA Highway 116 is in the city.

Harris County has an adopted solid waste management plan.

Needs Assessment

LaGrange Subtitle D Landfill has enough capacity at the current fill rate for another 30 years of use. If Harris County continues to contract with LaGrange their household garbage disposal needs for the next 30 years will be met. The current fill-pit at the Harris County inert landfill is good for another four years at the current fill rate. It takes five years at the current disposal level to maximize a pit capacity. A pit is approximately one-quarter of an acre in size. Total inert landfill space available is approximately 60 acres. Over the next 25 years Harris County may have to dig additional pits. Private inert material contractors are also operating in Harris County. Outsourcing inert waste to private contractors is also an option to handle inert material.

PUBLIC SAFETY

Law Enforcement

The Sheriff's Department provides law enforcement for unincorporated Harris County. Law enforcement is a cooperative effort with the Georgia State Patrol, the Georgia Bureau of Investigation, and other law enforcement agencies when the need arises. The Sheriff's Department is located in the eastern part of Hamilton on GA Highway 116 in the Law Enforcement Center.

The Sheriff's Department has 67 total employees including 41 sworn peace officers currently employed in patrol, investigations and court services. The aforementioned numbers do not include the sheriff, chief deputy and one administration officer. There are 2 non-sworn administrative office workers assigned to the Sheriff's office. There are 21 officers assigned to the jail. Of these officers there are 16 sworn jailers and 5 sworn peace officers in supervisory roles. The department operates 52 vehicles. The County maintains a ratio of approximately 1.4 deputies per 1,000 population, a ratio that is below the national average. These averages are not direct indicators of personnel needs because local demographic jurisdiction factors are important determinants of personnel requirements.

The Harris County Jail opened in 1993. It can house 100 prisoners, although the current jail population is well below this number. The facility provides adequate space for the Sheriff's office. The Sheriff's Department is fully equipped and staffed to meet the needs of the present population.

Needs Assessment

As the population continues to grow, staffing will need to increase proportionately to meet future service demands.

Fire Protection

Fire protection is provided by 11 volunteer fire departments and one paid fire department (City of West Point). Each of these departments, including those within the municipalities, is an independent entity that contracts with Harris County and the municipalities for fire protection services. The City of West Point does not contract with Harris County for fire protection services. The Georgia Forestry Commission assists the departments in field and wood fires. Harris County is working on hiring a Fire Service Director to help coordinate fire department issues and operations.

The following table details the personnel and ISO for the fire department in Harris County

**Table 2
Fire Resources**

Fire Department	Location	Number Of Volunteers	Number of Trucks	Type of Truck	ISO Rating
Antioch	1. 5430 GA Highway 219, Fortson	42	8	3-Pumpers (Yr.: 1981, 2007,2008) 1-Tanker (Yr.: 1996) 1-Ladder Truck (Yr.: 1981) 1-Service Rescue (Yr.: 2008) 1- Quick Response /Brush/Vehicle Fire Pumper (Yr: 2008) 1-Maintenance Van	6/9
	5219 Lickskillet Road		1	1 Pumper (Yr. 1981)	
	2. 85 Satellite Circle		2	1-Pumper (Yr. 1999) 1 Service/Rescue (Yr.2008)	
	7840 Hwy 219, Hamilton (aka Mountain Hill VFD)		1	1-Pumper (Yr. 2000)	
	3435 Mountain Hill Road (VFD/EMS (not substation))		2	1-Pumper (Yr. 2008) 1-Service/Rescue (Yr. 1994)	
	6. Harrisville Road		2	2-Pumpers (Yr. 1970, 1994)	
Cataula	1. 107 Raymond Drive Cataula 2. 7120 Highway 315, Cataula	26	8	5-Pumpers (Yr.: 70, 75, 79, 99, 00) 1-Pumper/Tanker (Yr.: 82) 1-Tanker (Yr.: 03) 1-Brush Vehicle (Yr.: 89)	5/9
Ellerslie	13425 Warm Springs Road Ellerslie	21	3	2-Pumpers (Yr.: 71,90) 1-Fire Trailer (Yr.: 97)	8/9
Hamilton	GA Highway 116 East Hamilton	14	2	2- Pumpers (Yr.: 99,06)	6/9
Hopewell	6381 Hopewell Church Rd. Pine Mountain	7	2	2-Pumpers (Yr.: 64,02)	10
Melody Lakes	Melody Lakes Subdivision Clubhouse, Waverly Hall	8	3	2-Pumper (Yr.: 80, 81) 1 –Pumper Tanker (Yr. 08)	5/9
North West Harris	1. 330 Whitesville Street West Point 2. 2340 Piedmont Lake Road, Pine Mountain	35	6	3-Pumpers (Yr.: 51, 53, 99) 1-Pumper/Tanker (Yr.: 71) 2-Tankers (Yr.: 62,66)	7/9
Pine Mountain Valley	95 Park Lane, Pine Mountain Valley	23	4	2-Pumpers (Yr.: 69,99) 2-Tanker (Yr.: 79,05)	5/9
Pine Mountain	Pine Mountain Safety Center Chipley Street	27	3	2-Class A 1500 1-Chevy ¾ Svc. Truck	5/9

Shiloh	City Hall, Shiloh	11	2	1-Class A 750 Pumper 1-Mack 1,000 gpm pumper	6/9
Waverly Hall	547 O'Neal Drive, Waverly Hall	16	3	1-Class A 750	5/9
West Point (Paid Fire Department)	100 W 7 th Street West Point, GA	7 Volunteers (10 Fulltime)	4 1 EMS	1-Callaway 300 gpm Tanker 1-Pierce 1250 Pumper 1-Pierce Pumper 1500 1-LaFrance Ladder Truck 1-EMS Unit	4

Needs Assessment

Harris County continues to improve fire protection service with a goal of lowering ISO ratings. Harris County uses the ISO recognized protection distance of five road-miles for residential structures and three miles for commercial structures to determine where new stations need to be located. The major reason for the high ISO rating in the unincorporated areas of Harris County is the lack of public water for fire protection. In some areas where public water is available, the line size and hydrant placement were not designed to meet fire-fighting needs. As improvements are continually being made to the water system, these needs will be addressed.

Between 2000-2002, Harris County added two satellite fire/EMS facilities, added another in January 2009 and has plans for one more fire/EMS satellite site to be added within the next 10 years. It is undetermined in what area the additional site will be placed. The addition of one more Fire/EMS facility and the expanded water coverage will be enough to handle the fire protection needs of the citizens of Harris County and the municipalities for the next 25 years.

Emergency Medical Service

Harris County operates a full-time Emergency Medical Service (EMS) from four separate facilities. One facility is located on GA Highway 116 east of Hamilton; the second, on Mountain Hill Road in Fortson; the third, in Waverly Hall at GA Highway 85 and O'Neal Street; and the fourth is currently in the Public Safety Building in Pine Mountain. The service operates four fully staffed and equipped ambulances, one from each facility. The service also has two reserve ambulances which are utilized during special events or when the main line ambulances are down for maintenance or mechanical failure. The current average response time is twelve minutes. Harris County EMS officials would like to lower their response time to 10 minutes.

Needs Assessment

Harris County plans to add one more EMS/fire facility within the next ten years. The addition of one more site will be adequate to handle EMS protection for the next 10 to 15 years. Beyond the 15 year window another facility will be needed to meet EMS demands. Additional facilities will help EMS officials meet their 10 minute response time goal.

E 9-1-1

Emergency calls for the Sheriff's Department, Fire Department, and EMS are answered by an Enhanced 9-1-1 system. The E 9-1-1 Center handles calls for the unincorporated areas of the County as well as calls from municipal areas. The E-9-1-1Center is located on GA Highway 116 next to the Harris County Law Enforcement Center. The E 9-1-1 Center is fully staffed and operates 24-7 with three employees each on 4 shifts. Harris County also has an 800 MHZ system with Troup and Muscogee Counties.

Needs Assessment

The current staff level of three employees per shift allows E 9-1-1 to handle the anticipated growth in calls for Harris County for the next 20 years. With regards to space, the existing facility can handle needs for the next twenty years as well.

Harris County Emergency Management Agency

Harris County Emergency Management plays an important part in County operations. Emergency Management is responsible for handling all natural and man-made disasters, such as tornadoes, hurricanes, severe thunder storms, damaging winds, ice storms, hazardous material spills, mass casualty/facility incidents, and Search and Rescue. Emergency Management has four phases: (1.) *Preparedness*. Making sure everyone from Public Safety Officials to the general public is prepared for a disaster through training, knowledge of local resources, and the importance of home emergency kits; (2.) *Mitigation*. Mitigation or Planning is a major part of Emergency Management, from the County Emergency Operation Plan to School Safety Plans to training students and seniors to make an Emergency Plan for their homes; (3.) *Response*. Going to the disaster scene, helping the victims through evacuations and/or shelters, and making sure everyone is safe; and (4.) *Recovery*. Working with victims filling out Disaster Relief forms, with volunteer agencies like the Red Cross and the Salvation Army to help victims get back on their feet, and with local and state agencies to help rebuild county infrastructure such as bridges and roads. Emergency Management now comes under the jurisdiction of Homeland Security. The Harris County Emergency Management Agency (EMA) works closely with the Sheriff's Office, City Police Departments, and Volunteer Fire Departments on training and grants.

Needs Assessment

EMA is currently located in the Harris County 911 Center. A recent building expansion to the 911 center for Emergency Operations Center space will meet space needs for EMA operations for the next 20 years.

HEALTH AND HUMAN SERVICES

Harris County Health Department

The Harris County Health Department is located on GA Highway 116 east of Hamilton. The building was constructed in 1983, and is used to full capacity. The Department offers full medical services as part of the West Central Georgia Regional Health District. The County Environmental Health Specialists has office space in the County Health Department. This office is responsible for regulating the size and location of on-site sewage disposal systems and wells as well as the inspection of food service establishments.

Needs Assessment

The Harris County Health Department facility located in Hamilton is at full capacity and is currently being expanded and renovated to meet existing and future demand. In 1994, the Health Department nursing staff saw approximately 4,000 cases. In 2008, Health Department nursing staff saw approximately 11,000 cases. In recent months the number of cases has increased considerably due to deteriorating economic conditions. The aforementioned numbers do not include environmental health staff, which has seen their inspections increase over the last 10 years as well. The expanded and renovated facility will be able to meet/handle future growth/patient demands. Staffing levels may need to be increased to meet future demand. Both nurses and environmental specialist may be needed.

Private Health Care

Hospitals with regional medical facilities are available in LaGrange to the north, Columbus to the south and Valley, Alabama to the northwest. Locally, there are private doctor's offices in Pine Mountain and Hamilton and a medical clinic in Fortson. The nearest nursing homes are located in Waverly Hall, Columbus, and LaGrange.

Needs Assessment

As the County grows, the need for more general practitioners will become greater. As a general rule of thumb there is a need for one general practitioner per 2,000 people or 28 practitioners by 2030. Of course this does not take into account those residents in Harris County that use doctors in Columbus and LaGrange and would continue to do so. However, with an increasing population, opportunities will be created for private health care facility/staff expansion. Currently there are three doctors for a population of 28,727 people. At that ratio Harris County could have six general practitioners or more by 2030.

Department of Family and Children Services (DFACS)

The Department of Family and Children Services is located on US 27 in Hamilton. The building location is good and is adequate for existing operations, but the building space is not adequate for current operations.

Needs Assessment

Even with the implementation of welfare reform measures, caseloads have increased. While caseloads in some areas have gone down (Temporary Assistance for Needy Families), caseloads in other areas (Medicaid) have gone up.

The largest increases in caseloads have been in child protective services and Medicaid. Child Protective Services caseloads in 2001 numbered 199; in 2003, 201. Medicaid cases have also increased, to 3,034 in fiscal year 2003, as compared to 2,408 in fiscal year 2000. State recommended caseload per manager is 26. In 2003, Harris County averaged 35 cases per manager. Overall caseloads are projected to increase as Harris County grows.

The current facility (5,314 square feet) is not adequate to handle existing operations. More space is needed now and space needs will only become greater as Harris County grows.

EDUCATION

Harris County Board of Education

The Harris County Board of Education administers the school system, which serves the residents of unincorporated Harris County, the City of Hamilton, the Town of Pine Mountain, the City of Shiloh, the Town of Waverly Hall and portions of the City of West Point. The Board of Education operates and maintains four elementary schools, one middle school, one high school, and one alternative school for grades Pre-K-12. An intermediate school for grades 5-6 will open in 2009. The system offers a full range of educational opportunities from Special Education through gifted programs. The high school offers a vocational education program. Current renovations/additions include adding classrooms to Park Elementary, Pine Ridge Elementary and New Mountain Hill Elementary adding eight classrooms. Harris County has started construction on a new school, Creekside, located next to Pate Park.

Needs Assessment

The residential growth that has occurred in Harris County has taxed the capacity levels of existing school facilities. Harris County schools have been adding approximately 50 students each year for the last several years to the middle school and 100 to the high school. Elementary enrollment is currently stable. However, school officials expect to see an increase in elementary school aged children over the next 25 years.

In the long term, by the year 2030, school enrollment at all levels will exceed existing capacity. Total current enrollment is 4,955 students. In 2030, there could be approximately 9,000 to 10,000 school-aged children in Harris County. Increases in the number of elementary, middle school and high school students are expected. More students mean the addition of classrooms to existing schools or the construction of new schools or both.

For comparison purposes, Troup County in 2002/2003 school years (with a population of approximately 60,000 people) had 11,779 students. During that year Troup County School Board operated nine elementary schools, three middle schools, and three high schools.

The comparison to Troup County does not intend to suggest that Harris County will have a comparable number of schools in 2030, but it is intended to provide a comparative glimpse at what is necessary to handle a school enrollment of that magnitude.

**Table 3
Harris County
2008-2009
Enrollment by School**

School Name	Year Built	Site Size	Students	Grades
Educational Opportunity CTM.	1962	24 acres	40	0
Harris County Carver Middle School	1962*	83 acres	1,024	6-8
Harris County High School	1999	100 acres	1,595	9-12
Mulberry Creek Elementary School	1999	90 acres	619	PK-5
New Mountain Hill Elementary School	1990	18 acres	511	PK-5
Park Elementary School	1988	54 acres	533	PK-5
Pine Ridge Elementary School	1990	82 acres	640	PK-5
Total Students			4,955	

*Renovated 1999

Private Schools

There is one private school in Harris County. The Waverly Hall Christian Academy is located in Waverly Hall and has 50 students.

Post Secondary School

All post secondary education facilities are located in neighboring Columbus, LaGrange, and Thomaston. Schools located in those cities include: Columbus State University, LaGrange College, West Georgia Technical College, Columbus Technical College, and Flint River Technical College.

RECREATION AND PARKS

Harris County operates 4 parks: the Charles Moultrie Complex, Harris County Soccer Complex, Pine Mountain Valley Park, and E.C. Pate Park. Harris County has also purchased the abandoned Georgia Southwest rail line and intends to convert the line to a linear bike/pedestrian trail and /or utility easement. In addition, the Town of Pine Mountain has 2 parks, and the Town of Waverly Hall has 1 park. The Town of Waverly is in the process of developing a second park. These are the only local public park facilities currently available to County residents. A comprehensive recreation plan was completed in 2000.

Charles Moultrie Complex is located east of Hamilton on Highway 116. The 29-acre complex is a baseball/softball facility with 7 fields, 5 of which are lighted. Five (5) of the fields are used for baseball with a field used for softball and the remaining field used as combination field for softball and tee-ball. Charles Moultrie Park also has 3 adult/child batting cages with 2 of the cages lighted. In addition, there is a field house with a meeting room and kitchen, a picnic area, and a half-mile paved walking track.

The Soccer Complex of 36 acres is located across from Moultrie Park behind the Harris County Agri-Center on GA Highway 116 in Hamilton. Presently the complex has 7 playing fields, with room to expand to 8 fields. The complex has a pavilion, 2 concession stands with restrooms, picnic tables, and bleachers capable of seating 600 people. Currently under construction at Pate Park is a combination football/2 baseball field facility.

A 4-mile bike/pedestrian trail and restroom facility has been built adjacent to the Soccer Complex and the Harris County Agri Center. The looped bike trail begins in Hamilton behind City Hall, heading east in front of the Harris County Health Department and then to the Soccer Complex.

The Pine Mountain Valley Chamber of Commerce leases Pine Mountain Valley Recreation Park to the County. Located at the intersection of GA Highway 116 and GA Highway 354, the 11-acre park has a baseball/softball field, junior-size basketball court, a tennis court, a picnic pavilion with restrooms and play equipment.

E. C. Pate Park is located next to Mulberry Creek School. E. C. Pate Park is a 100-acre facility with 5 lighted softball/baseball fields and field house (concessions and meeting room). Currently under construction at Pate Park is a combination football/2 baseball field facility.

Pine Mountain Park is a five-acre facility located in the northwestern part of the town along Dallas Mill Road between US 27 and Butts Mill Road. The park offers recreational activities for all age groups. It has 2 lighted tennis courts, a lighted softball field, multipurpose courts, picnic tables, and restrooms.

Pine Mountain ball fields are located on Williams Street behind the recently renovated Pine Mountain Gym. The 4-acre facility has 2 Little League Fields.

Waverly Hall Recreation Park is a 6-acre facility located in the southern part of the town off GA Highway 85. The park has 2 tennis courts, a lighted baseball/softball field, multipurpose court, picnic tables, and restrooms.

The Waverly Hall Village Green is a 14-acre area between GA Highway 85 and O'Neal Drive, which was formerly a railroad right-of-way. A one-mile oval walking/biking track has been developed in this area.

A new recreation facility in Waverly Hall is also under construction. The facility is located off Highway 208 and once completed will have 2 baseball fields, a football field and a pavilion with restrooms.

Hamilton Square is located on US 27 in the middle of Hamilton. The Square has been planted with shade and decorative trees.

Harris County and the municipalities also have facilities, which are available to the public for special uses:

Hamilton Clubhouse is located on US 27 in Hamilton. Harris County owns and maintains the building, which is a meeting room with kitchen facilities.

Waverly Hall Community Building is located on O'Neal Drive. It has a community center/gymnasium and a "tot" playground.

Waverly Hall Government/Arts Building, formerly an elementary school, houses the town hall, police department, court, and voting functions. The auditorium has been renovated for community meeting and performance space. In addition, there are 2 conference rooms and a kitchen/dining room, which are available for public use. Waverly Hall also has a walking trail that covers a 14-acre area.

The Carver Resource Center, formerly a middle school, in Hamilton is used for child and adult recreational activities. The facility is owned by the Harris County Board of Education and is in good structural condition. The Carver Resource Center is used for basketball and summer youth programs.

The Harris County Agri-Center is located on GA Highway 116 east of Hamilton across from the Charles Moultrie Complex. The Agri-Center includes the Mike Tracy Arena, where the Harris County Cattleman's Association sponsors an annual rodeo. Harris County High School also sponsors a rodeo once a year. The Osshatchee Indian Festival & Pow Wow is also held once a year in October at the soccer complex, which is located next to the Agri-Center. The Agri-Center is also used by the 4-H Club. Harris County also owns the Old Mountain Hill Schoolhouse facility which is used as a library, meeting place and local theater. The Schoolhouse is located at the intersection of SR 219 and Mountain Hill Road.

These local facilities are supplemented by a variety of cooperative and private recreational opportunities.

The Harris County Board of Education operates 7 schools in the County. Use of the school recreational facilities is available to organized, supervised community groups. The Board of Education signs an agreement with such groups to assume liability. The facilities are free to nonprofit organizations and available for an hourly fee to others. Youth sports associations and scout groups are the major users. Community use of playground equipment during non-school hours is not encouraged.

Cataula Youth Sports Association, to meet the demand for baseball fields for youth competition, secured and developed a 5-acre site on Chambliss Road in Cataula. The facility includes 3 baseball fields as well as a concession/storage building with restrooms.

In addition to local facilities, F. D. Roosevelt State Park, Callaway Resort, and areas developed by Georgia Power Company (Blanton Creek and Lake Harding recreation areas) are available to Harris County residents.

Needs Assessment

In September of 1999, Harris County created a recreation plan for the unincorporated areas and the municipalities. Future demand was determined by using National Park Service Standards with input from the Harris County Board of Commissioners, Harris County Recreation Plan Advisory Committee, the Harris County Recreational Board and the general public. Table 4 depicts Recreational Resource Facilities need for the year 2030 as based on National Park Service Standards.

**Table 4
Recreational Resources and Facilities**

Type Of Resource	Suggested Size (In Acres) Per Resource	Space Per 1,000 Persons	Number Of Existing Facilities	Total Area Of Existing Facilities	Space Needed Based On 56,227 People	Surplus Or Deficiency
Playlot/Playground	.25 To 25	.25-1.5 Acres	4	40 Acres	14:84 Acres	-9
Neighborhood Park	5 To 10	2 Acres	0	0	112 Acres	-112
Play Field	6 To 20	1.5 Acres	0	0	84 Acres	-84
Community Park	20-50	2 Acres	4	39	112 Acres	-73
District Park	20-500	20 Acres	2	130	1,124 Acres	-994
Open Space	1-25	1 Acre	N/A	N/A	56 Acres	Na
Baseball	3	1 Field	12 Fields	N/A	56 Fields	-44
Basketball	Varies	1 Court	9 Courts	N/A	56 Courts	-47
Soccer	N/A	1 Field/3,000	5 Fields	34 Acres	19 Fields	-14
Softball	2	1 Field/2,000	4 Fields	N/A	28 Fields	-24
Tennis	2	1 Court	8 Courts	N/A	56 Courts	-48
Swimming	N/A	1/40,000	1 Pool (F.D.R.)	N/A	1 Pool	0
Hiking & Camping	500-1,000	10 Acres	2 Parks	Approx. 20,000 Acres	562 Acres	19,438
Picnic Area	Varies	4 Acres	5 Sites	10	224 Acres	-214
Passive Water Sports	20	1 Lake/ 25,000	2 Lakes	15,000 Acres +	2 Lakes	0
Recreation Center	1-2	1 Acre/ 10,000	3	9 Acres	6 Acres	3

*Source: Harris County Recreation Plan, 1999

Based on a 2030 population of 56,227 persons, Harris County shows a deficiency of space on number of fields/courts in every category but Hiking/Camping (+19,438 acres) and Recreation Center needs (+ 3 acres). Thus, there seems to be a need for a variety of recreation facilities from Parks (District, Neighborhood and Community) to softball fields, baseball fields, basketball courts, soccer fields, and tennis courts. The National Park Guidelines are useful, but only as a general guide; they are no substitute for determining the recreational desires of residents or recreation staff/ Board of Commissioner opinion on needed facilities. Within the next ten years Harris County recreation staff sees a need for more baseball and softball fields, a community center and adult baseball, volleyball and softball programs. Cataula will be expanded in 2009. The Fortson community will be in need of new or expanded facilities.

GENERAL GOVERNMENT

General Administrative Offices

The County Government Complex is located in the City of Hamilton. The complex is made up of the Courthouse, a 26,000-square foot Courthouse Addition, County Annex, and Community Development Department building. The original courthouse is listed on the National Register of Historic Buildings and has been extensively renovated and restored. The first two floors of the courthouse have been renovated to provide updated and adequate office space. The courtroom has been restored to its original 1908 appearance. A renovated house, located adjacent to the courthouse, houses the offices of the Commissioners, County Manager, County Clerk, Accounting and Registrar. The County also owns another facility, the Hamilton Clubhouse (attached to the new Extension Service facility), which is handicap accessible and is used for public meetings.

Needs Assessment

The building which houses the Commissioners, County Manager, County Clerk, Accounting and Registrar is crowded and additional office space maybe needed in the future to meet needs. As County grows additional space for the County Courthouse may be needed. Superior Court, especially the Deed Room, may need additional space by 2030 or before. Growth demands may also necessitate more room for the Building, Inspections, Zoning and Planning departments; all of which are located in the Community Development Building.

Library and Other Cultural Facilities

The Troup-Harris Regional Library system operates the library located in Harris County. The library facility is located on US 27 and was completed in 1992. The library offers an adult literacy program, a summer reading program, and a story time for pre-school children. Typewriters and computers are also available for public use. There are 2 full-time and a part-time staff person augmented by volunteers and a branch library at Old Mountain Hill School. The branch library is open Monday thru Thursday in the afternoon.

Needs Assessment

The existing libraries do not meet the recommended space standard of 1 square foot per capita. Total space (both facilities) is approximately 12,000 square feet. With a population of approximately 28,000, Harris County needs an additional 16,000 square feet to meet recommended space requirements.

With a 2030 population of 56,227, Harris County officials would have to add 44,000 square feet to meet recommended standards. Either more libraries need to be built or the existing libraries need to be expanded. With expanded facilities more staff would be needed as well to meet 2030 demand. Harris County is currently planning to expand the existing library or building a new one to meet future needs.

Extension Service

The Extension Service has a new permanent building, which is a home office and is attached to the Hamilton Clubhouse. The Clubhouse is owned by the County. Existing facilities should be adequate to meet needs for the next 25 years.

Senior Center

The County has built a new Senior Center on Highway 116. It should be adequate to meet the needs of senior citizens for the next 25 years.

United States Post Office

There are several post offices located in the unincorporated areas of the County. These post offices are located in Cataula, Ellerslie, Midland, and Pine Mountain Valley.

OTHER

Other property owned by the County in Hamilton includes the Agri-Center, Emergency Services Center, which houses 911 and EMS Headquarters, Vehicle Maintenance, Prison, Law Enforcement Center, Animal Shelter, Facilities Maintenance Shop and a convenience center. The Old Mountain Hill Schoolhouse, in Fortson, is renovated and restored, and houses a branch of the County library, meeting rooms and a restored auditorium. There is also a new Mental Health and Substance Abuse Center (Horizon Building), a center for the mentally and physically challenged, Pine Mountain Soil Conservation Office, Senior Center, Moultrie Park, North Business Park and Soccer Complex on Highway 116 east of Hamilton.